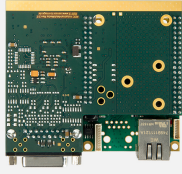


Camport SDTV2GigE

PAL/NTSC to GigE Vision Converter



At a Glance

- Connect one NTSC/PAL Camera to a standard GigE port
- Ultra-low latency and jitter
- Sphinx SDK included
- Compliant with GigE Vision and GenICam standards
- Standard version (with housing) and OEM version (without housing) available
- Standard (0°C to +70°C) and extended (-40°C to +85°C) temperature range

Benefits

Real-time video streaming

Stream video and imaging data in real time over standard GigE connections using the industry-standard GigE Vision protocol.

Use legacy NTSC/PAL cameras with GigE ports

Long reach: 100 m point-to-point

GigE network segments can be a maximum length of 100 meters (328 feet) using standard Cat 5e or Cat 6 cabling. Using off-the-shelf Ethernet switches and fiber converters, distances can be unlimited.

Multicast capability

Multicast capability enables advanced distributed processing and control architectures.

Sphinx SDK included

A feature-rich software toolkit that provides the building blocks needed to quickly and easily design high-performance video applications that use minimal CPU resources.

- Filter driver and acquisition library for Windows
- Sample applications, including GigE Vision/GenICam compliant viewer

Compatible with 3rd party software

Compatible with 3rd party GigE Vision/GenICam compliant vision software libraries (including MIL, LabView, Halcon, CVB...)

Extended temperature range version available: -40 to +85°C / -40 to +185°F

Standard (with housing) and OEM (without housing) versions available

Applications

Life Sciences & Medical

- High-definition image acquisition and streaming from Flat Panel Detectors (FPD)
- Standard and high-definition image acquisition for endoscopy applications
- Standard and high-definition image acquisition for dental applications
- Standard and high-definition image acquisition for video-guided surgery applications

Microscopy

- High-definition image acquisition for offline inspection stations
- High-definition image acquisition for laboratory and measuring microscopes

Video Monitoring, Surveillance & Security

- High-definition low latency video streaming over IP for remote control
- High-definition low latency video streaming over IP for critical infrastructure
- High-definition low latency video streaming over IP in mines

Specifications

Mechanical

Form Factor	Standard and EXT versions: <ul style="list-style-type: none">• Stand-alone device with enclosure OEM and OEM EXT versions: <ul style="list-style-type: none">• Baseboard and camera module assembly
Housing	Standard version only: <ul style="list-style-type: none">• Fanless aluminum housing
Mounting	Standard and EXT versions only: <ul style="list-style-type: none">• Desktop or wall-mount
Connectors	All versions: <ul style="list-style-type: none">• 'SDTV' on camera module:<ul style="list-style-type: none">– 15-pin 2-row sub-D connector– CVBS input• 'GIGE' on baseboard module:<ul style="list-style-type: none">– RJ-45 socket– GigE Vision device interface Standard and EXT versions only: <ul style="list-style-type: none">• 'POWER/IO/RS232':<ul style="list-style-type: none">– 15-pin 2-row high-density female sub-D connector– Power input, RS-232, CMOS IO OEM and OEM EXT versions only: <ul style="list-style-type: none">• 'POWER/IO/RS232' on baseboard module:<ul style="list-style-type: none">– Molex 53047-1010– Power input, CMOS IO
Dimensions	Standard version: <ul style="list-style-type: none">• 110 mm x 68 mm x 112 mm OEM version: <ul style="list-style-type: none">• 91.5 mm x 20 mm x 86 mm
Weight	<ul style="list-style-type: none">• Standard versions: 470 g, 16.6 oz• OEM versions: 80 g, 2.8 oz

Camera / video inputs

Interface standard(s)	NTSC-M, PAL-B/G, RS-170, CCIR
Termination resistor	Yes, not removable
Number of cameras	One Composite Video Base Band (CVBS) camera
A/D converter	One, 8-bit

Video delivery

Raw video format(s)	Mono8, RGB8, BAYER8, YUV422, YUV444
---------------------	-------------------------------------

Area-scan camera control

Trigger	No
Strobe	No

On-board processing

On-board memory	<ul style="list-style-type: none">• CPU: 8 MB• Frame buffer: 24 MB• Flash: 8 MB• EEPROM: 8 kB
Video	Deinterlacing using the 'weave' method
Input LUT (Lookup Table)	No

General Purpose Inputs and Outputs

Number of lines	Four I/O lines: <ul style="list-style-type: none">• Two inputs• Two outputs
Electrical specifications	<ul style="list-style-type: none">• 3.3 V CMOS inputs• 3.3 V 20 mA CMOS outputs

Network

LAN interface	Ethernet 10BASE-T/100BASE-TX/1000BASE-T, automatic speed negotiation
LAN connector	RJ45 with link and activity LED indicators
Internet layer protocols	IPv4, UDP and ICMP (ping)

System integration

COM	One Full-duplex RS-232 COM port
-----	---------------------------------

Electrical

Supply voltage	8 to 15 V DC, power supply via external unit
Power consumption	Standard and EXT versions: <ul style="list-style-type: none">• 3.5 W typical OEM and OEM EXT versions: <ul style="list-style-type: none">• 3.5 W typical

Software

APIs	Sphinx SDK: <ul style="list-style-type: none">• Filter driver and acquisition library for Windows• Sample applications, including GigE Vision/GenICam compliant viewer• Driver installation tool• Documentation
------	----------------------------------------------------------------------------------------------------------------------------------------------------------------------------------------------------------------------------------------------------------

Environmental conditions

Operating ambient air temperature	Standard and OEM versions: <ul style="list-style-type: none">• 0 to +70 °C / +32 to +158 °F EXT and OEM EXT versions: <ul style="list-style-type: none">• -40 to +85 °C / -40 to +185 °F
-----------------------------------	----------------------------------------------------------------------------------------------------------------------------------------------------------------------------------------------------------------------

Operating ambient air humidity	Standard and OEM versions: <ul style="list-style-type: none">• TBD EXT and OEM EXT versions: <ul style="list-style-type: none">• TBD
--------------------------------	------------------------------------------------------------------------------------------------------------------------------------------------------------------

Storage ambient air temperature	Standard and OEM versions: <ul style="list-style-type: none">• TBD EXT and OEM EXT versions: <ul style="list-style-type: none">• TBD
---------------------------------	------------------------------------------------------------------------------------------------------------------------------------------------------------------

Storage ambient air humidity	Standard and OEM versions: <ul style="list-style-type: none">• TBD EXT and OEM EXT versions: <ul style="list-style-type: none">• TBD
------------------------------	------------------------------------------------------------------------------------------------------------------------------------------------------------------

Certifications

Electromagnetic - EMC standards	To be confirmed: <ul style="list-style-type: none">• European Council EMC Directive 2004/108/EC• United States FCC rule 47 CFR 15
---------------------------------	----------------------------------------------------------------------------------------------------------------------------------------------------------

EMC - Emission	To be confirmed: <ul style="list-style-type: none">• EN 55022:2010 Class B• FCC 47 Part 15 Class B
----------------	---------------------------------------------------------------------------------------------------------------------------

EMC - Immunity	TBD
----------------	-----

Flammability	PCB compliant with UL 94 V-0
--------------	------------------------------

RoHS	European Union Directive 2011/65/EU (ROHS2)
------	---------------------------------------------

REACH	European Union Regulation 1907/2006
-------	-------------------------------------

WEEE	Must be disposed of separately from normal household waste and must be recycled according to local regulations
------	----------------------------------------------------------------------------------------------------------------

Ordering Information

Product code - Description	<ul style="list-style-type: none">• 8110 - Campport SDTV2GigE• 8110-E - Campport SDTV2GigE (EXT)• 8110-O - Campport SDTV2GigE (OEM)• 8110-OE - Campport SDTV2GigE (OEM) (EXT)
Optional accessories	1675 - Power Supply for Picolo.net HD1 and Campport



AMERICA

Euresys Inc.

27126-B Paseo Espada - Suite 704
San Juan Capistrano, CA 92675 - United States
Phone: +1 949 743 0612
Email: sales.americas@euresys.com

EMEA

Euresys SA

Liège Science Park - Avenue du Pré-Aily, 14
4031 Angleur - Belgium
Phone: +32 4 367 72 88
Email: sales.europe@euresys.com

ASIA

Euresys Pte. Ltd.

750A Chai Chee Road - #07-15 Viva Business Park
Singapore 469001 - Singapore
Phone: +65 6445 4800
Email: sales.asia@euresys.com

CHINA

Euresys Shanghai Liaison Office

17F, Unit AB, N. 588 Yan An Dong Road - Huangpu District
CN-200001 Shanghai - China
Euresys上海联络处
上海黄浦区 延安东路588号17楼AB座
200001
Phone: +86 13817814488
Email: sales.china@euresys.com

JAPAN

Euresys Japan K.K.

Expert Office Shinyokohama - Nisso Dai 18 Building, Shinyokohama 3-7-18
Kouhoku-Ku, Yokohama-Shi 222-0033 - Japan
〒222-0033
神奈川県横浜市港北区新横浜3-7-18 日総第18ビル エキスパートオフィス新横浜
Phone: +81 45 594 7259
Email: sales.japan@euresys.com

More at www.euresys.com

